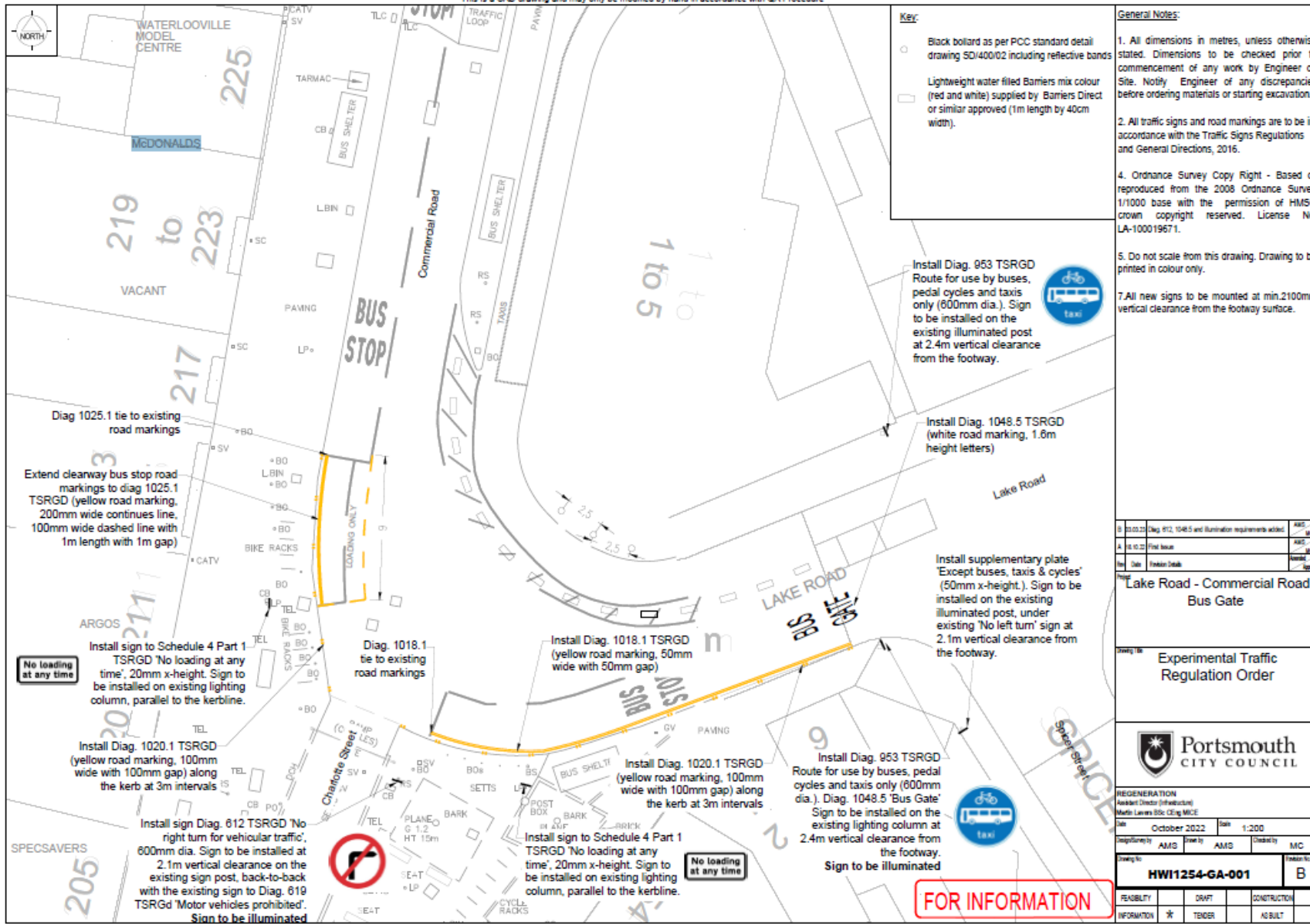


Appendix A- Map of restriction changes



Key:

- Black bollard as per PCC standard detail drawing SD/400/02 including reflective bands
- Lightweight water filled Barriers mix colour (red and white) supplied by Barriers Direct or similar approved (1m length by 40cm width).

General Notes:

1. All dimensions in metres, unless otherwise stated. Dimensions to be checked prior to commencement of any work by Engineer on Site. Notify Engineer of any discrepancies before ordering materials or starting excavation.
2. All traffic signs and road markings are to be in accordance with the Traffic Signs Regulations and General Directions, 2016.
4. Ordnance Survey Copy Right - Based on reproduced from the 2008 Ordnance Survey 1/1000 base with the permission of HMSO crown copyright reserved. License No. LA-100019671.
5. Do not scale from this drawing. Drawing to be printed in colour only.
7. All new signs to be mounted at min.2100mm vertical clearance from the footway surface.

B	23.03.22	Diag 912, 1048.5 and Illumination requirements added	AMS	MC
A	16.10.22	Final Issue	AMS	MC
Rev	Date	Revision Details	Author	Checker
Project: Lake Road - Commercial Road Bus Gate				

Planning: Experimental Traffic Regulation Order



REGISTRATION			
Assistant Director (Infrastructure)			
Martin Lavers BSc (Eng) MICE			
Date:	October 2022	Scale:	1:200
Prepared by:	AMS	Drawn by:	AMS
Checked by:	AMS	Disseminated by:	MC
Drawing No:	HW11254-GA-001		Revision No:
Feasibility:	DRAFT	CONSTRUCTION:	
Information:	★	TENDER:	AS BUILT:

FOR INFORMATION