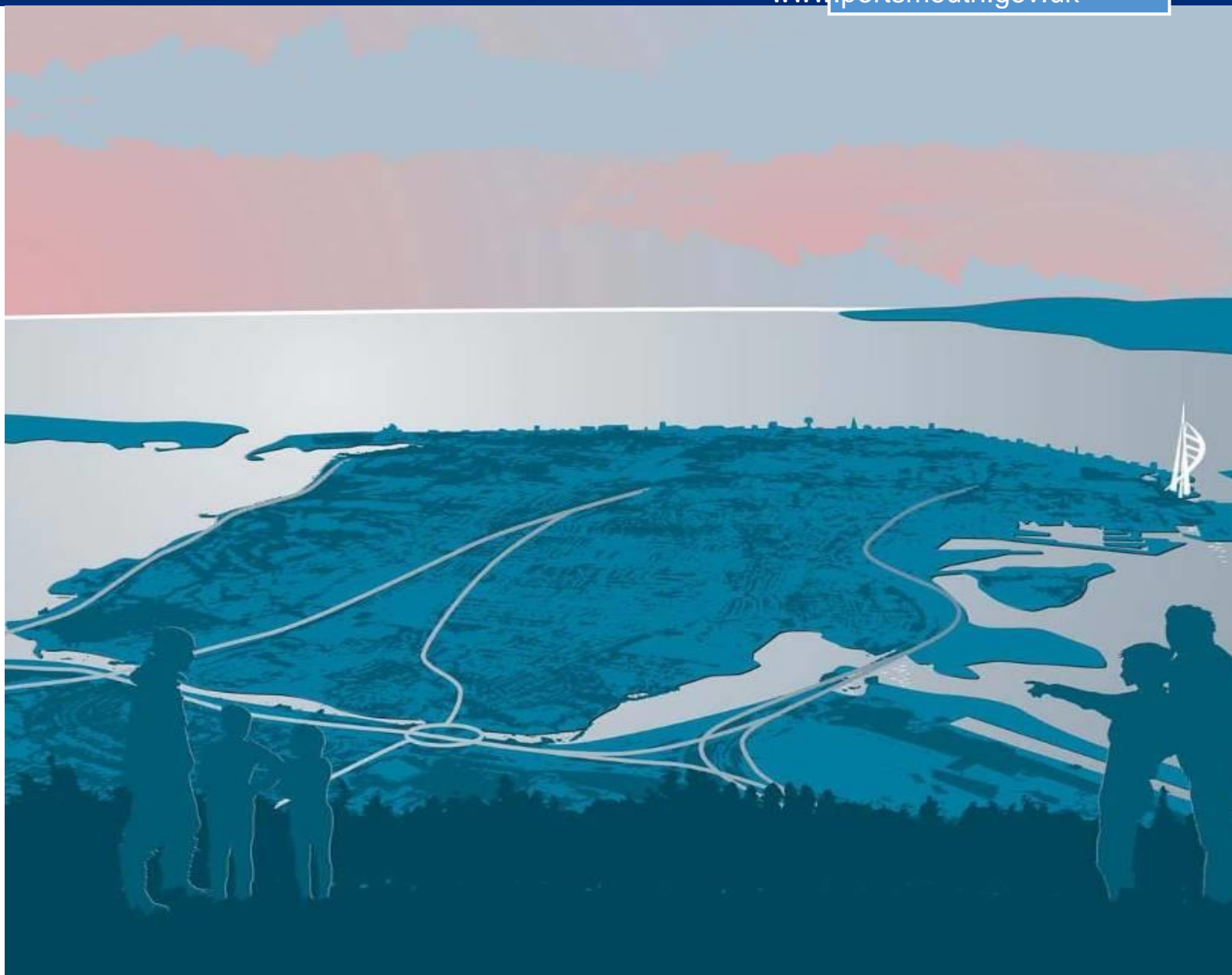


Portsmouth Local Development Scheme

A timetable for the production of Portsmouth's Local Planning Policies

www.portsmouth.gov.uk



Portsmouth Local Development Scheme
A timetable for the production of Portsmouth's Local Planning
Policies

Contents

1.	Introduction.....	1
	What is the Local Development Scheme?.....	1
	The Local Plan Making System.....	1
2.	Portsmouth’s planning policy framework.....	2
	The current development plan	2
	The future development plan	6
	Supplementary planning documents.....	Error! Bookmark not defined.
3.	The project plan	7
4.	Monitoring and review.....	9

Portsmouth City Council provides the Ordnance Survey mapping included within this publication under license from the Ordnance Survey in order to fulfil its public function as a planning authority. Persons viewing this mapping should contact Ordnance Survey copyright for advice where they wish to licence Ordnance Survey map data for their own use.

1. Introduction

What is the Local Development Scheme?

1.1 Under the Planning & Compulsory Purchase Act 2004 the council have to produce a Local Development Scheme (LDS). This LDS has been produced to give local residents and other stakeholders information about:

- The plans that the city council will be preparing over the next three years
- The subject matter of those plans and the geographical areas they cover
- The timetable for the production and adoption of the plans

1.2 This LDS will be effective from February 2019.

The Local Plan Making System

1.3 The Localism Act 2011 seeks:

- the production of a Local Plan.
- a duty to cooperate with neighbouring authorities
- the introduction of neighbourhood planning

1.4 The city council cooperates extensively with neighbouring authorities across South Hampshire through the Partnership for Urban South Hampshire (PUSH). PUSH is a group of local authorities working together to address cross-boundary issues. The city council helps to meet its obligations under the duty to cooperate as part of PUSH.

1.5 There are a number of existing adopted planning policy documents, including the Portsmouth Plan Core Strategy, a Community Infrastructure Levy Charging Schedule, the Southsea Town Centre Area Action Plan (AAP) and the Somerstown and North Southsea AAP and the Hampshire Minerals and Waste Plan. The Portsmouth Local Plan currently being prepared will replace the Portsmouth Plan, the Southsea Town Centre, the Somerstown APP, the North Southsea APP and also the saved policies in the City Local Plan (2006).

2. Portsmouth's planning policy framework

- 2.1 Legislation requires planning applications to be determined in accordance with the 'development plan' unless material considerations indicate otherwise. Its different elements are set out below.

The current development plan

Title:	Portsmouth Plan (Portsmouth's Core Strategy)
Adoption date:	January 2012
Website:	http://www.portsmouth.gov.uk/living/planning
Description:	<p>The other planning policy documents are in compliance with the Portsmouth Plan. The Portsmouth Plan sets out the overall vision and objectives for the city.</p> <p>The plan contains policies for the development of strategic sites in the city including Tipner, Port Solent, Horsea Island, the city centre, Lakeside Business Park, Somerstown and North Southsea and Fratton Park as well as the city's district centres and seafront. There are also core policies seeking sustainable, high quality development together with a suite of development management policies. Each policy section sets out the mechanisms through which the proposals will be implemented as well as a monitoring framework.</p>
Title:	The policies map
Adoption date:	January 2012 (latest revisions)
Website:	http://www.portsmouth.gov.uk/living/16299.html
Description:	The policies map sets out all of the adopted local planning policies geographically. It will be updated as part of the new Portsmouth Local Plan.
Title:	Portsmouth City Local Plan saved policies
Adoption date:	July 2006
Website:	https://www.portsmouth.gov.uk/ext/development-and-planning/planning/the-portsmouth-plan-adopted-2012.aspx
Description:	The Local Plan covers the whole city and contains strategic policies, policies for determining planning applications and specific allocations for individual sites. Most of the plan has been replaced by the Portsmouth Plan but some development management and site allocation policies still apply.

Title: Southsea Town Centre Area Action Plan
Adoption date: July 2007
Website: <https://www.portsmouth.gov.uk/ext/documents-external/pln-area-action-plan-southsea-town-centre-jul07.pdf>
Description: This AAP covers Southsea town centre and redefines the centre in anticipation of development in the town centre. It contains policies on retail and town centre uses, traffic and access, design and heritage, the public realm and opportunity sites. It was adopted in 2007 as a ten year plan for the centre but is to be reviewed as part of a new Portsmouth Local Plan.

Title: Somerstown and North Southsea Area Action Plan
Adoption date: July 2012
Website: <https://www.portsmouth.gov.uk/ext/documents-external/pln-area-action-plan-somerstown-nsouthsea-jul12.pdf>
Description: This AAP covers the Somerstown and North Southsea part of the city and contains a vision and planning policies to support the regeneration of this area. It is to be reviewed as part of a new Portsmouth Local Plan.

Title: Minerals and Waste Plan
Adoption date: October 2013
Website: <https://www.hants.gov.uk/landplanningandenvironment/strategic-planning/hampshire-minerals-waste-plan>
Description: Portsmouth City Council, as a minerals and waste planning authority, has a statutory duty to prepare a Local Plan to guide the need for, and locations of, minerals and waste management development. The Council works jointly on minerals and waste matters with Hampshire County Council, Southampton City Council, New Forest National Park Authority and the South Downs National Park Authority ('the Hampshire authorities'). The Hampshire Minerals and Waste Plan sets out a spatial vision for future minerals and waste planning in Hampshire and includes site allocations. This has been supplemented by two SPDs on Oil and Gas Development and Minerals and Waste Safeguarding which provide additional guidance on the implementation of the of the HMWP relating to these issues.

Title:	The Statement of Community Involvement
Adoption date:	June 2017
Website:	https://www.portsmouth.gov.uk/ext/documents-external/pln-sci-2017-final.pdf
Description:	The Statement of Community Involvement (SCI) sets out how residents and other stakeholders can be involved in putting together plans for the future of the city and in determining planning applications.

Title:	Community Infrastructure Levy Charging Schedule
Adoption date:	January 2012
Website:	https://www.portsmouth.gov.uk/ext/documents-external/pln-cil-charging-schedule.pdf
Description:	<p>The CIL Charging Schedule sets a locally based infrastructure tariff giving developers more certainty over what they will have to contribute to support infrastructure development. It spreads the cost of providing infrastructure over a wide range of developments and provides a fund to put in the place essential infrastructure to support development. It replaces the Section 106 mechanisms in many cases, although the S106 regime continues for site specific infrastructure and affordable housing. A list of infrastructure which will be or may be provided through CIL is set out in the Regulation 123 list.</p> <p>The CIL charging schedule sits alongside the planning policy documents but does not form part of the statutory development plan.</p>

Supplementary planning documents

- 2.2 Planning policies within development plans set out the requirements for development proposals in an area. Development plan documents can be supplemented by Supplementary Planning Documents (SPDs), which provide greater detail on specific Local Plan policies, helping in their implementation. However, SPDs are only prepared when they are clearly justified and provide further guidance for development on specific sites or on particular issues. They are not part of the development plan but are a material consideration in the determination of planning applications.

2.3 The adopted Portsmouth SPDs are:

- Houses in Multiple Occupation (2018)
- Housing Standards (2013) and review briefing note (2015)
- Eastney Beach Habitat Restoration and Management Plan (2014)
- Parking Standards and Transport Assessments (2014)
- Student Halls of Residence (2014)
- Achieving Employment and Skills Plans (2013)
- Portsmouth City Centre Masterplan (2013)
- Tall Buildings (2012)
- The Hard (2012)
- The Seafront Masterplan (2010)
- Air Quality and Pollution (2006)
- Reducing Crime through Design (2006)
- Developing Contaminated land (2004)

2.4 Current SPDs can be viewed online from:

<https://www.portsmouth.gov.uk/ext/development-and-planning/planning/the-portsmouth-plan-adopted-2012>

2.5 Unless stated otherwise, the new Local Plan, once adopted, will supersede the existing SPDs.

The future development plan

2.6 The Council is reviewing its Local Plan documents. :

Portsmouth Local Plan This plan will set out the overall strategy and strategic priorities for accommodating development in Portsmouth. It will include strategic sites for housing, employment and proposals for other key land uses. It will replace the policies set out in the Portsmouth Core Strategy and those set out in the Southsea Town Centre and North Southsea and Somerstown AAPs. The saved policies in the 2006 Portsmouth City Plan will also be replaced by this new Local Plan.

Hampshire Minerals and Waste Plan Review The existing Hampshire Minerals and Waste Plan will be reviewed to ensure that its policies remain up-to-date and effective in order to maintain a reliable and timely supply of minerals and efficient management of Hampshire's waste.

Sustainability Appraisal

2.7 A Sustainability Appraisal (SA) assesses the likely social, economic and environmental effects of draft policies and proposals in planning policy documents. An initial framework for the sustainability appraisal of planning policy documents was developed in 2017 and published as part of the Issues and Options consultation. An SA is an iterative process that informs the development of the Local Plan as it progresses. Local Plan proposals will be revised to take account of the appraisal findings.

Supplementary Planning Documents (SPDs)

2.8 It may be necessary to revise existing SPDs, or prepare SPDs on new topics, as work on the new Local Plan progresses. Details on consultation on new and revised SPDs will be published on the Portsmouth City Council website.

3. The project plan

3.1 The following section sets out the timescale for each planning policy document that the council are intending to produce over the next three years. For each document, the following information is set out:

- the title of the document
- a brief description of its role
- a map of the area it will cover
- the plan's position relative to other policy documents
- projected dates for the milestones in the plan's preparation

3.2 The milestones in a Local Plan's preparation are as follows:

Preparation	This is often referred to as 'regulation 18' consultation under the 2012 regulations. This consists of one or more formal opportunities for stakeholders to comment on the content of the plan.
Publication	This is often referred to as 'regulation 19' or 'pre-submission' consultation. This is the publication of the plan in a form which the Council believe to be sound. There then follows at least a six week period for interested parties to comment on the plan. Such comments must specifically relate to the legal compliance and soundness of the plan.
Submission	This is when the plan is submitted by the council to the Secretary of State (regulation 22 of the 2012 regulations). The Examination of the Local Plan starts at this point.
Hearings	The most crucial time in the Examination is the hearings sessions (regulation 24 of the 2012 regulations), however plans can be examined purely through written representations. The hearings are roundtable discussions where the Inspector explores the issues the plan raises.
Inspectors report	The Inspector then issues a report on the Examination. This sets out whether the plan is legally compliant and sound. It also sets out any changes the council requests the Inspector to make to the plan in order for it to be found sound.
Adoption	The final stage in the process is the formal adoption of the plan by the council (regulation 26 of the 2012 regulations). From then on it forms part of the development plan.

P o r t s m o u t h L o c a l P l a n

The new Portsmouth Local Plan will set out the strategy for development in the city and identify strategic development sites to meet future development needs. It will allocate sites for housing, employment, retail and community uses where appropriate. It will also identify and designate areas to be protected from development. Once adopted it will replace the Portsmouth Plan, 2012 and the saved policies from the Portsmouth City Local Plan 2006.

Joint production? No

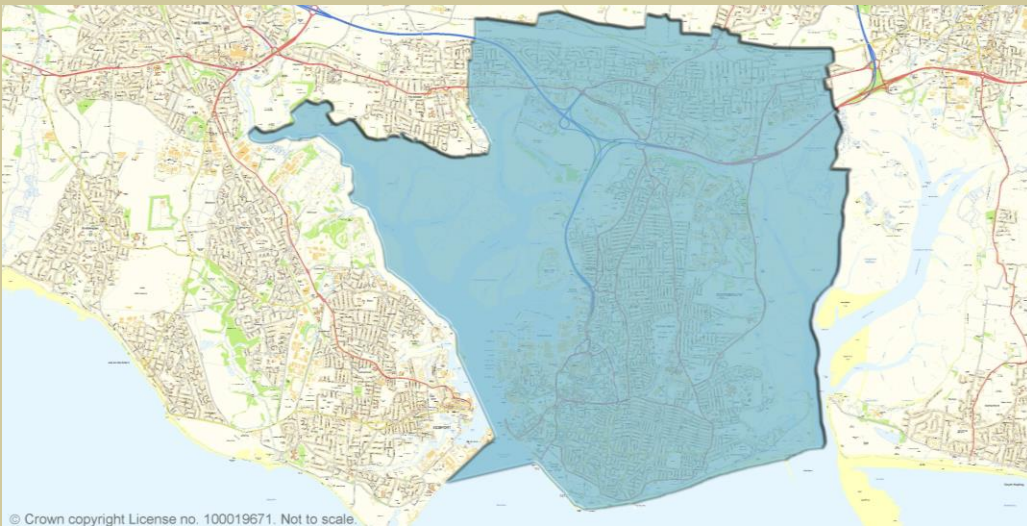
Chain of conformity

National policy	National Planning Policy Framework
Regional policy	The South Hampshire Position Statement (non-statutory)
Local policy	The Portsmouth Local Plan

Timetable for production

Preparation	Issues and Options consultation July 2017
Preparation	Local Plan Update consultation February 2019
Preparation	Draft Plan consultation December 2019
Publication	Proposed Submission Plan consultation June 2020
Submission	September 2020
Hearings	December 2020
Inspectors report	March 2021
Adoption	June 2020

Geographical coverage



Hampshire Minerals and Waste Plan

The existing Hampshire Minerals and Waste Local Plan (2013) is due for review in 2020. The Hampshire Minerals and Waste Local Plan seeks to ensure the Plan area has the right development to maintain a reliable and timely supply of minerals and efficient management of Hampshire's waste, whilst protecting the environment and communities. It will contain policies to enable minerals and waste decision-making as well as minerals and waste site allocations (for rail depots, wharves, quarries and landfill sites).

Joint production?	Yes - the plan will be prepared collectively by Portsmouth City Council, Hampshire County Council and Southampton City Council together with the New Forest and the South Downs National Park Authorities.
-------------------	--

Chain of conformity

National policy	National Planning Policy Framework
Regional policy	n/a
Local policy	The above authorities' Local Plans

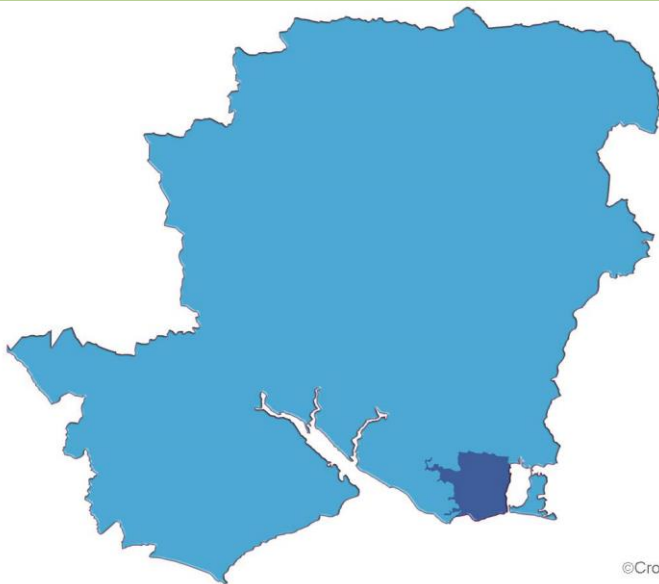
Timetable for production

Hampshire County Council (HCC) conducted an initial review of the Hampshire Minerals and Waste Plan in 2018. The report's recommendation, that the HMWLP does not require review at this time, was approved by HCC Full Council on 29th November 2018. It is instead proposed to review the HMWP again in 2020 to determine the effectiveness of the policies and to consider whether there is a need to amend the existing site allocations. In the interim, a clearer understanding may emerge around the key issues expected to impact capacity and demand. These recommendations are to be considered by Portsmouth's Planning, Regeneration & Economic Development committee on 26th February 2019 and by Full Council on 19th March 2019.

A Stakeholder Workshop is due to provisionally take place in 2019 to investigate the issues raised within the initial 2018 Review and how the trends within minerals supply and sustainable waste management provision are developing. A more detailed timetable will be published in due course and will be available from: <http://www3.hants.gov.uk/mineralsandwaste/planning-policy-home.htm> and will be reflected in future revisions to this document.

The review of the Plan will determine that either: the policies do not need updating, and publish the reasons for this decision; or that one or more policies do need updating and the Local Development Scheme will be updated to set out the timetable for this revision.

Geographical coverage



©Crown copyright License no. 100019671. Not to scale.

4. Monitoring and review

- 4.1 The Authority Monitoring Report (AMR) will assess progress of development plan documents against the programme in this LDS. Any changes to the proposed programme will be reflected in an update to the LDS.
- 4.2 The AMR will identify any changes needed to the planned development documents. If there is a need for an additional document which is not in the LDS or there are further substantial regulatory changes, this LDS will be refreshed to incorporate this.
- 4.3 If you have any queries about the timetabling and progress of the planning policy documents, please get in touch with a member of the planning policy team.

Call us on: 02392 437863
Email us at planningpolicy@portsmouthcc.gov.uk
Write to us at Planning Policy
Regeneration Directorate
Portsmouth City Council
Guildhall Square
Portsmouth
PO1 2AU

Planning Policy
Portsmouth City Council
Guildhall Square, Portsmouth
PO1 2AU

Telephone: 023 9243 7863
Email: planningpolicy@portsmouthcc.gov.uk

www.portsmouth.gov.uk

You can get this
Portsmouth City
Council information
in large print, Braille,
audio or in another
language by calling
023 92437863



Corporate member of
Plain English Campaign
Committed to clearer communication.

264